



INAPPROPRIATE CONTENT

19 May 2016



Inappropriate content – Definition



Definition of “Inappropriate content”

Inappropriate content is that which breaches norms or standards on social, religious, cultural or other grounds.

The description of inappropriate content is therefore different for different people.

IMPORTANT! Inappropriate doesn't necessarily mean illegal.

Inappropriate content – How to protect our children from inappropriate content?



- Monitor
- Participate
- Talk

Inappropriate content – Basic terms



- **Age relevancy** – a feature of particular content determining its adequacy for particular group age. Content might be relevant for older target groups but sometimes it happens that it is relevant to younger target groups and therefore it is also considered irrelevant.
- **Violent** – displaying harmful images or information including aggressive behavior
- **Offensive** – aiming at offending feelings, beliefs or habits of others

Inappropriate content – Basic terms



- **Inappropriate content** – content which breaches norms or standards on social, religious, cultural or other grounds.
- **Parental controls** – a features which may be included in digital television services, computer and video games, mobile phones and software.

There are four categories of P.C.:

1. content filters,
2. usage controls,
3. computer usage management tools,
4. monitoring.

Parental controls can help us block our children's access to inappropriate content

Inappropriate content – Factors on which we base our judgement



- Culture
- Age of the internet user
- Individual sensitivity
- Regulations in our country
- Previous experience with different kinds of content
- Religion

Inappropriate content – Who needs protection and why?



WHO?

- Children
- Teenagers
- Adults
- Individuals
- Families
- Communities
- Society

WHY?

- To stay safe
- To follow the rules
- To keep innocence
- To respect principles
- To stay loyal to your religion
- To feel good



Inappropriate content – Online and offline (examples)



ONLINE

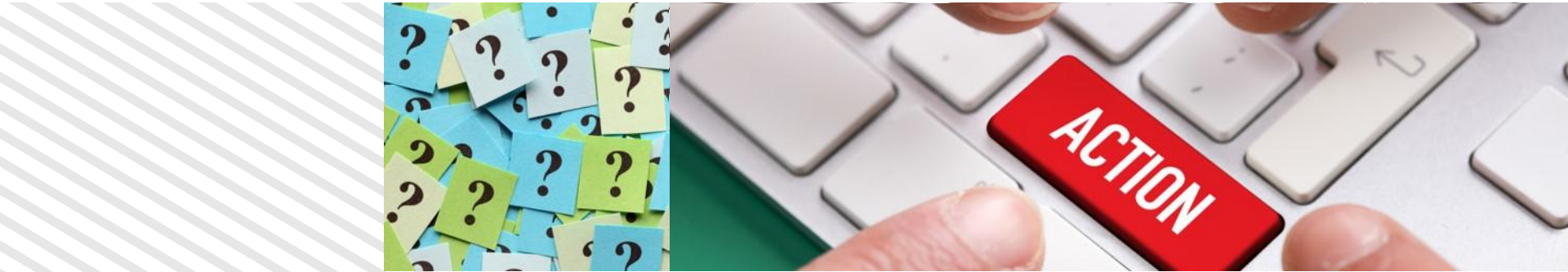
- Programs
- Websites
- Applications
- Messages

OFFLINE

- Behavior
- Clothing
- Language
- Opinions



Inappropriate content – So, what do we do?



- Monitor
- Observe
- Guide
- Protect
- Participate



Inappropriate content – What have we learned in this lecture?



- What is inappropriate content?
- What factors influence our judgment of the content?
- Who is responsible for judging the appropriateness of the content?
- What can we do?



Thank you

For more information,
please contact us at info@safespace.qa

